

### REAL-TIME TV GRAPHICS FOR NEWS BROADCASTING IN SD, HD and 4K.

Graphics workstation EXPRESS-TITLES is using for template creation for graphics and information broadcasting: TV news, live broadcasting, broadcasting for 4K videowalls, weather forecasts, etc.



#### MAIN CAPABILITIES

- Creating and editing of database on different sections: cities, studio guests, exchange rates, weather, etc.
- Import data into database from official sources (NEWSROOM, data system, external database, Internet, etc).
- Creating and editing of graphics templates for TV broadcasting.
- Real-time creating and playback of 2D compositions.
- GUI customization (graphic control interface): distribution of control buttons into logic groups, adjustment of their position, size and color.
- Autofill of graphics compositions from the database.
- SD, HD and 4K formats.

#### ADDITIONAL CAPABILITIES

- «Picture-In-Picture» «live» video window.
- Support of MOS-protocol and XML data format.
- Output to the air up to three news crawls.
- Integration with automation systems.
- Spell checking in Database.
- Digital clocks and countdown timer up to next event.
- TimeLine for editing in/out effects of graphics composition.
- Unicode support for text encoding and representation.
- Real-time connection to on-line services Yandex. Probki, Yandex. Weather, Currency exchange rates, News, etc.
- SMS and phone voting system with diagram results playback to the air.
- GPI and VBI STCE104 comands for control of TV news graphics playback.
- Remote control unit (RCU) for reactive playback of TV news graphic.
- Jingle player with synchro-start of titles and graphics compositions, audio mixing.



## GRAPHICS WORKSTATION EXPRESS-TITLES

### Control panel

Elements field from the Database.

Comfortable GUI (graphic control interface), customization of control buttons position, size, color, «hide» buttons function.

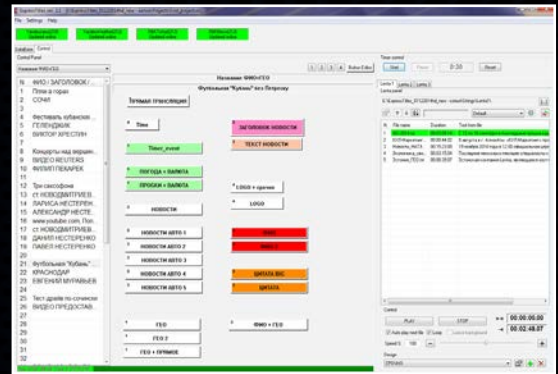
Control panel of a countdown timer.

Player of graphics compositions.

Crawl and News ticker control panel.

Indication of connecting to on-line services.

Indication of CPU loading.

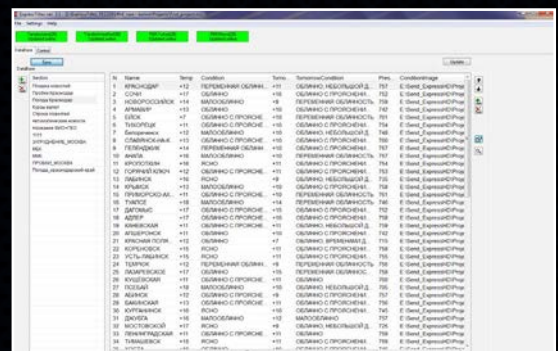


### Database

DataBase on different sections, allows to add necessary amount of rows and columns to table and to format table information, using text and graphics data.

Database storage in \*. xls format.

Spell checking (support of a lot of dictionaries with possibility of adding new words).



### Graphics template designer

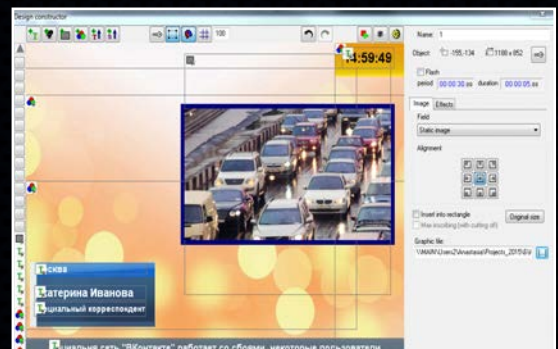
TimeLine - editing in/out effects of graphics composition.

Multilayer composing. Alpha-channel graphics (control from 0 to 255 for every graphic layer).

Adding to composition text, image, animation, colored rectangle, element «ticker», «Picture-In-picture» «live» video window.

Countdown timer, local time, xml-import.

2D in/out effects, time delay, crawl speed.



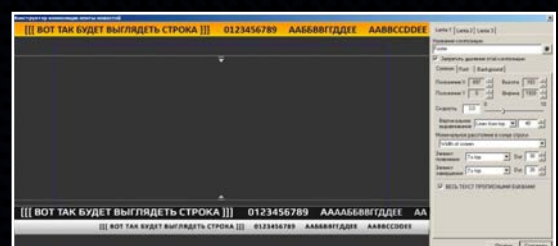
### Crawl editor

Data xml-import of weather, news, traffic, other.

Editing of crawl playback: position, speed, in/out effects, vertical text/image alignment.

Editing of text parameters.

Adding of background from animation, image or colored rectangle.





- **AUTOMATION-PROXY** program option.

Control of graphics composition output by broadcast automation systems Harris, AVECO, Pebble Beach, etc, through Chyron Intelligent Interface (CII), Oxtel, MOS, etc.

- **DB-PROXY** program option.

Provides integration with external databases, located on NAS.

- **VOTING-PROXY** program option.

Provides integration with systems of collecting statistics data (phone/sms voting).

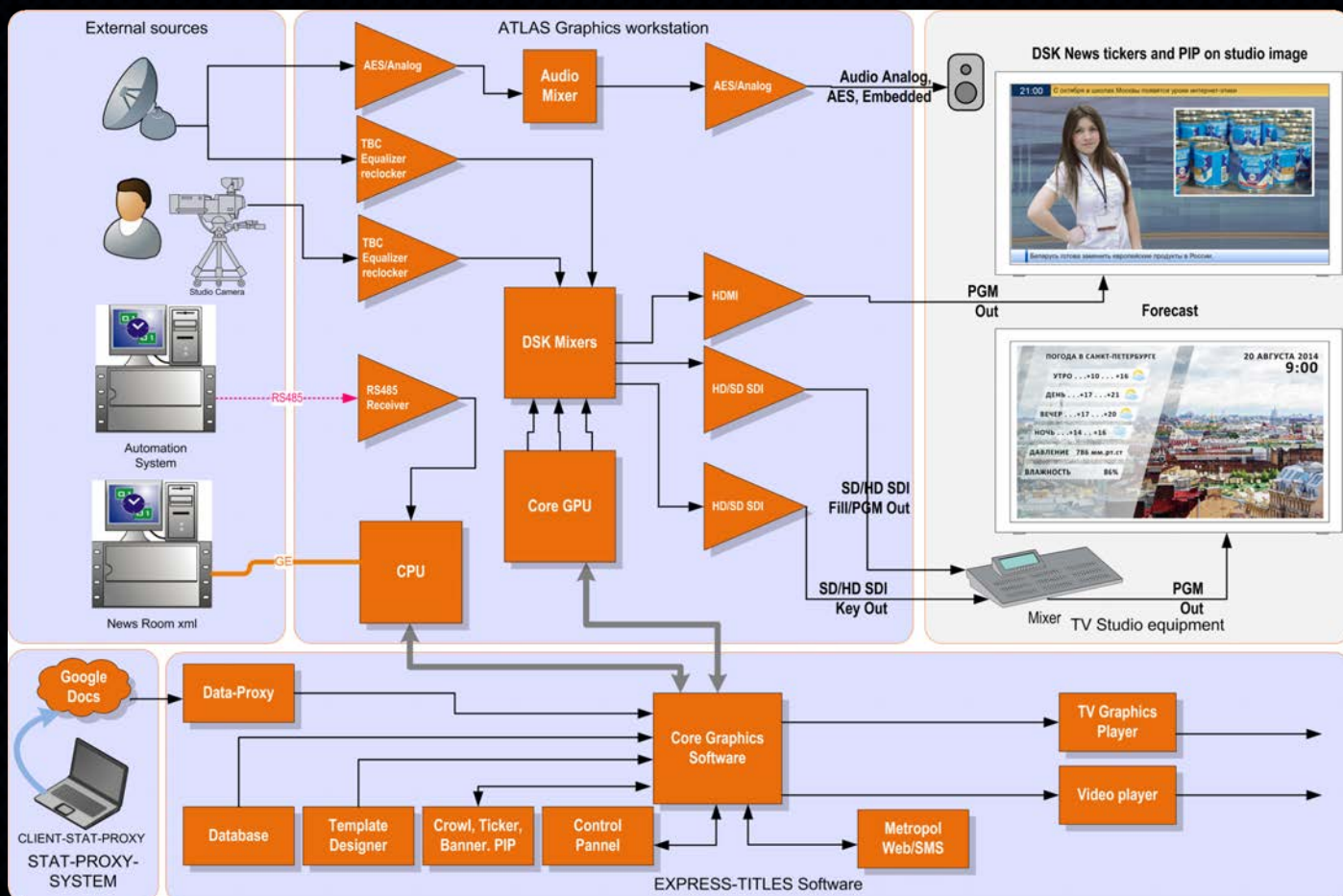
- **VANC-READER** program option.

Provides automatic control of graphics composition playback on the air on VBI SCTE104 commands.

- **«Picture-In-Picture»** program option.

Provides «Picture-In-Picture» effect: forms several scale «live» video windows. Multi codecs.

## EXPRESS-TITLES WORKSTATION STRUCTURE





## TECHNICAL SPECIFICATION

**Graphics workstation «ATLAS»:** Windows 7 Pro 64-bit Intel Core i7 / RAM16Gb / 2xHDD (System, RAID 1), 2xHDD (Graphics, RAID 0) / RJ45 1GbE / GPU NVIDIA reinforced / Interfaces - GPI, LTC, RS232/422/485 / Hot Swap PSU.

**Video interfaces:** BM DeckLink 4K Extreme | BM UltraStudio 4K | Matrox | AJA for connection to Air studio and OBVan. Graphics output in the TV standard (Fill&Key signals).

**Supported standards:** SD - 625/50 | HD - 1080/50i, 1080/60i, 1080/25p, 720/50p, 720/60p, 1080/50p | 4K (4x1080/50p) | HDMI.

**Input video signals.** PGM In: SD-SDI - SMPTE 259M, HD-SDI - SMPTE 292M, Sync Black Burst PAL, Tri-Level Sync.

**Output video signals.** Fill, Key, PGM Out: 2xSD-SDI - SMPTE 259M, 2xHD-SDI - SMPTE 292M, HDMI.

**Audio interfaces:** Analog balanced (XLR) and digital (Embedded, AES) stereo - input and output.

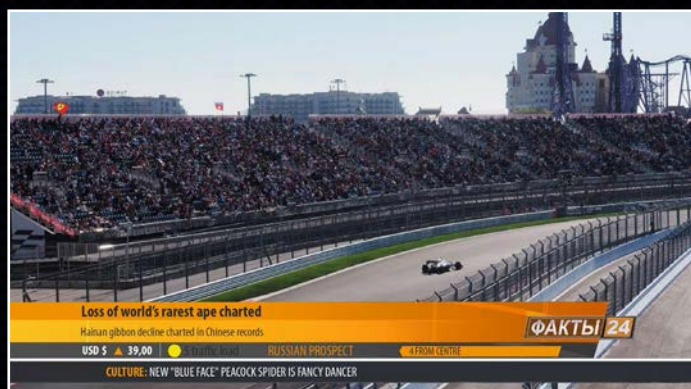
**Relay bypass.**

**Dimensions:** 4RU 440 x 176 x 500, 20 kg.

2RU 440 x 88 x 710, 25 kg.

Notebook + SDI interfaces unit, 8 kg.

## EXAMPLES



## REAL USERS OF EXPRESS-TITLES STATION



197101, Russia, Saint-Petersburg, 10 Kamennooostrovsky prospect, 30-N,  
+7(812) 922-37-92 [info@intvco.ru](mailto:info@intvco.ru) [www.intvco.com](http://www.intvco.com)